

RFID Elevator Controller

For Visionline electronic locking systems

VingCard's 3G RFID Elevator Controller for Visionline system is designed to fit into elevator panels and can be operated off- or online. The security level of the property will increase, as only guests with a valid keycard will have access to the elevators.



FEATURES

- : Modern and minimalistic design – based on the same reader unit as Signature 3G RFID locks.
- : Possible to limit access to floors according to each guest or staff keycard's privileges.
- : 8 relay outputs to selectively enable the elevator call buttons is delivered as standard.
- : Extendable with up to 15 extra relay modules, each with 8 relay outputs. This gives a maximum of 128 relay outputs.
- : Can also control different devices such as electronic strikes and motor locks as a remote controller.
- : Fully compatible with Visionline system.
- : Ring around the reader can be delivered in black, Satin Chrome, Satin Brass, Polished Chrome or Polished Brass.
- : RFID Specifications:
 - 13,56MHz technology
 - Compatible with the following standards:
 - ISO 14.443 A (MIFARE)
 - ISO 14.443 B
 - ISO 15.693

ASSA ABLOY

ASSA ABLOY Hospitality

The global leader in
door opening solutions

TECHNICAL DATA

Power requirements

Maximum current consumption for the elevator reader 150 mA continuously.

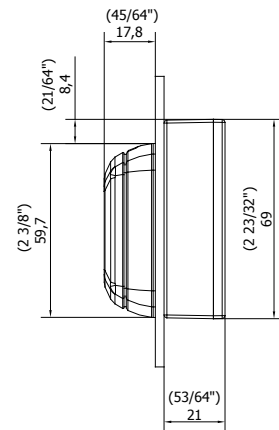
Maximum current consumption for each relay module Maximum current consumption for each relay module.

Maximum load of relay outputs 0,6A@125VAC or 2A@30VDC Resistive.

Each complete unit, supplied individually packed, consists of RFID Reader with frame in black, Satin Chrome, Satin Brass, Polished Chrome or Polished Chrome.
20 m cable.
RS-485 Gateway used as relay module and online communication gateway.

External power supply must be ordered in addition if needed.

Dimensions:



Configuration overview of Elevator Controller in an online:

